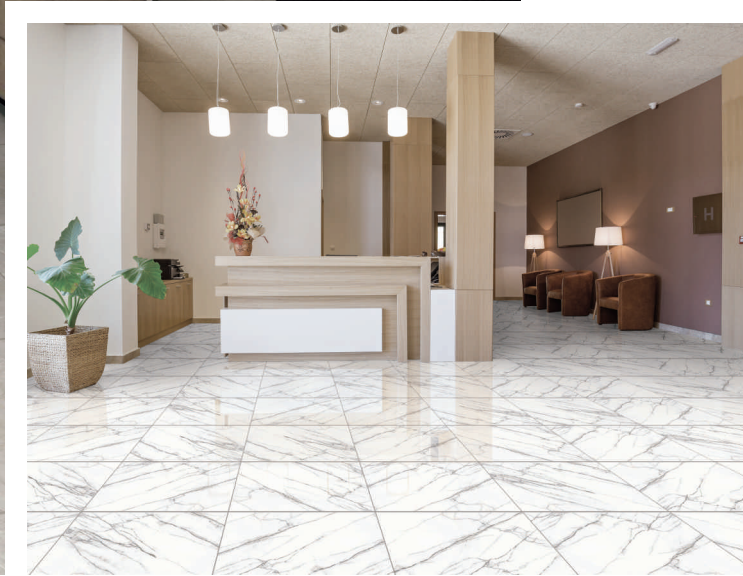




Kajaria **INFINITY**

Glazed Vitrified Tiles

600 x 600 mm

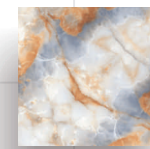
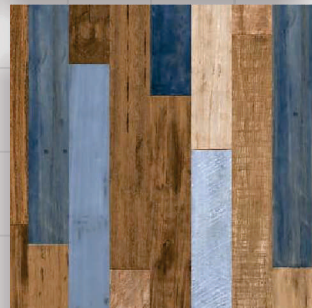
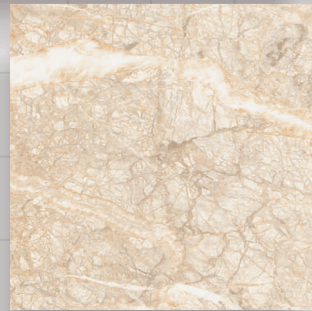
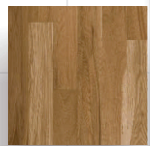
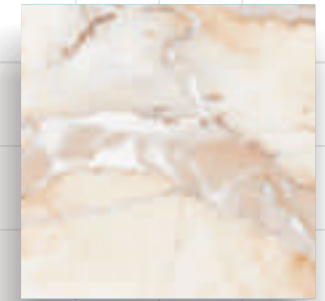
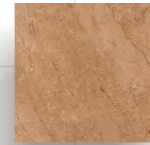
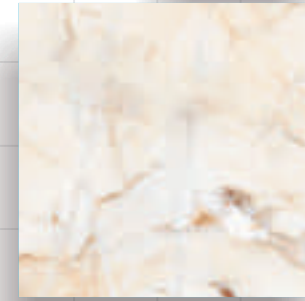
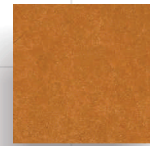


INTRODUCING
KAJARIA INFINITY
600 x 600 mm

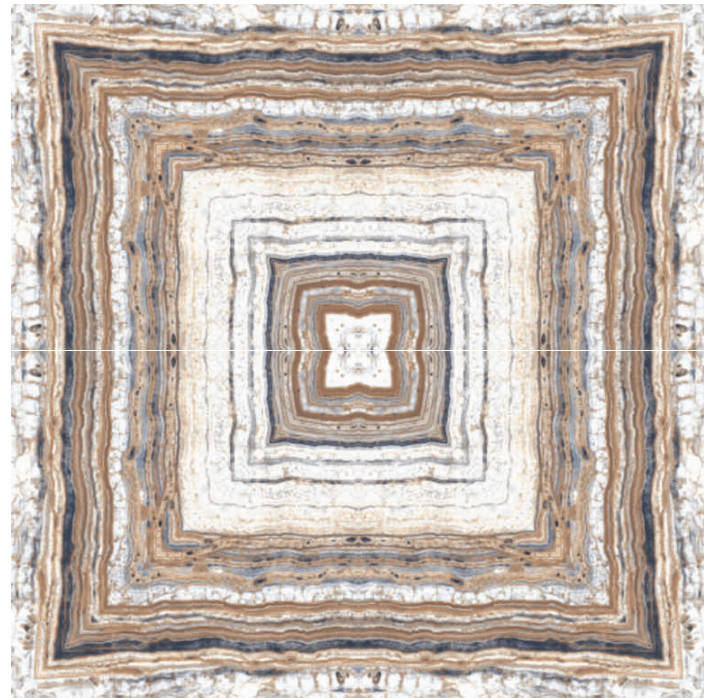
MAGNIFYING THE BEAUTY OF OUR WORLD

Kajaria Infinity 600x600 mm tiles combine elegance and engineering into a truly smooth and expansive feeling for every surface. Their lofty impression needs to be experienced first-hand to be appreciated with a spectrum of designs to create an elevated aura of sophistication in every space. Their timeless beauty is designed for durability, with features to make maintenance a hassle-free experience

600 x 600 mm



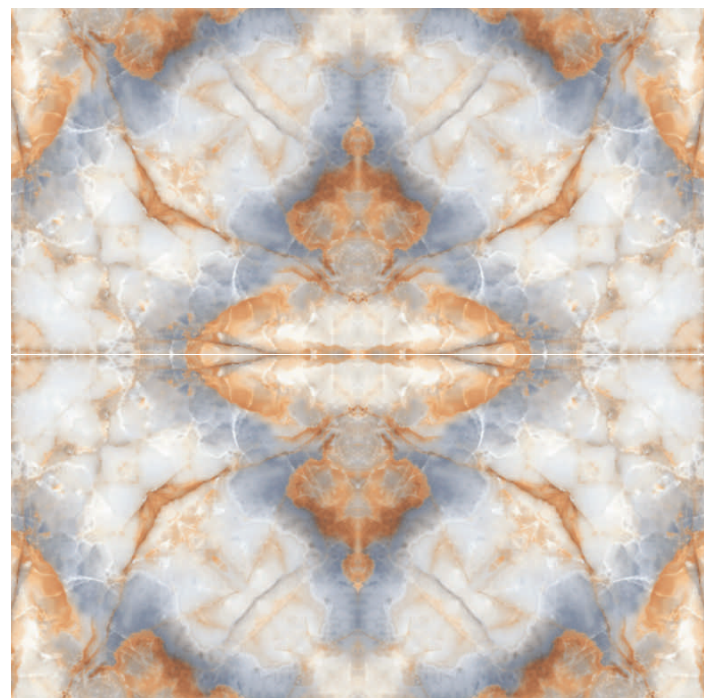
600 x 600 mm



TIGRON BEIGE

POLISH

BOOK MATCH



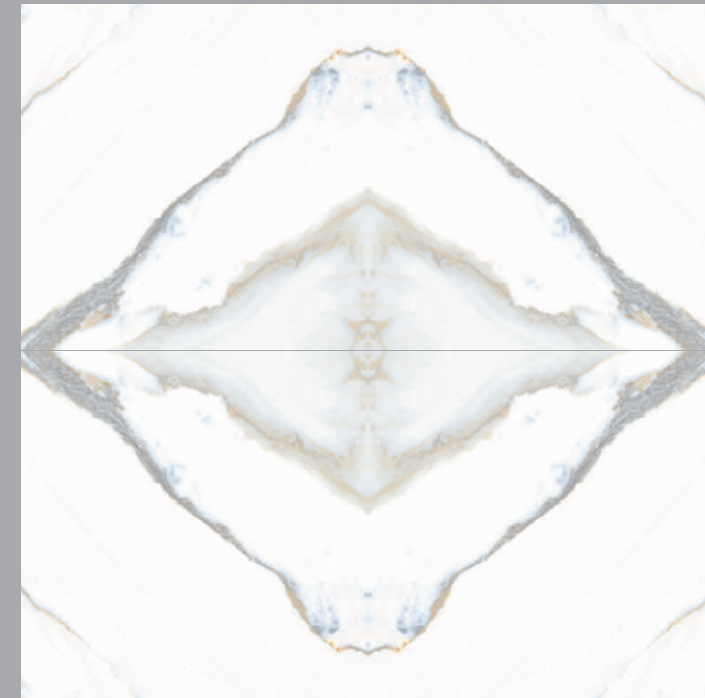
ONYX RUBEL

POLISH

BOOK MATCH

Kajaria
INFINITY

Glazed Vitrified Tiles



CONTESSA WHITE

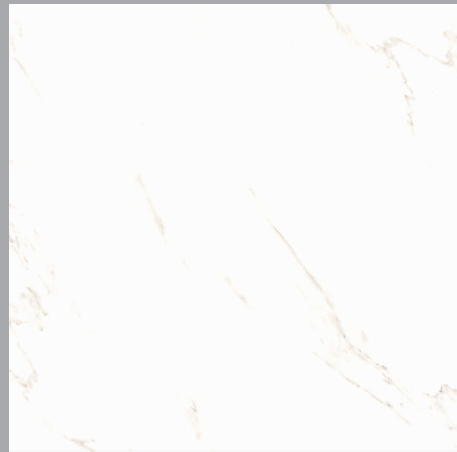
POLISH

BOOK MATCH



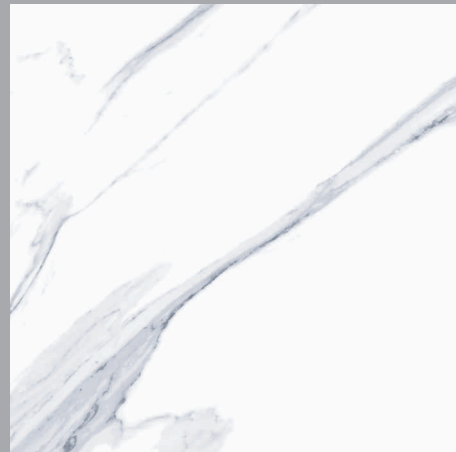
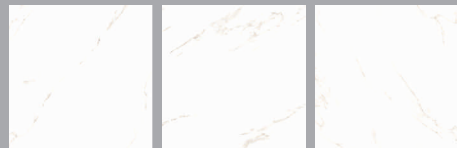
CONTESSA WHITE (BOOK MATCH) | POLISH

600 x 600 mm



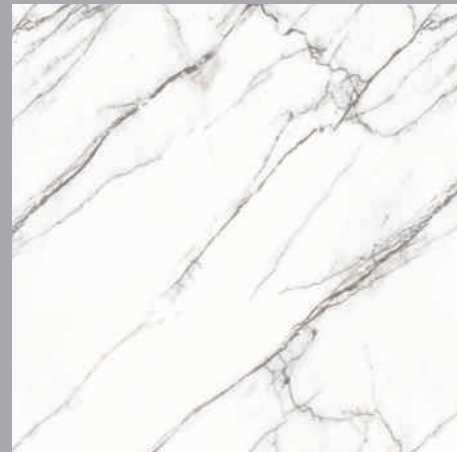
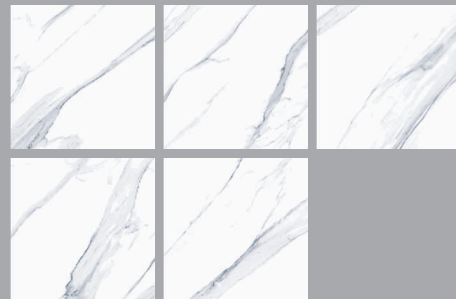
ROMA SATUARIO POLISH/MATT

RANDOM 3



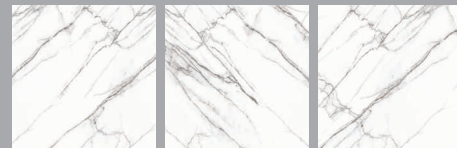
SATUARIO CLASSIC POLISH

RANDOM 5



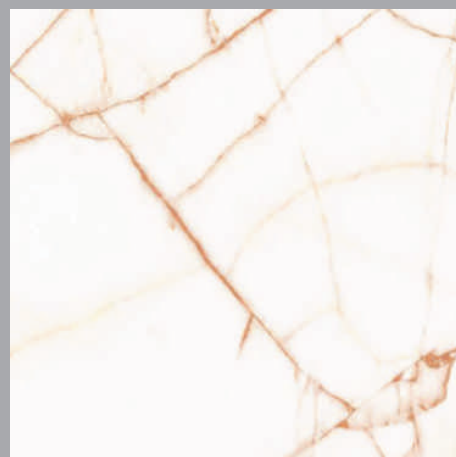
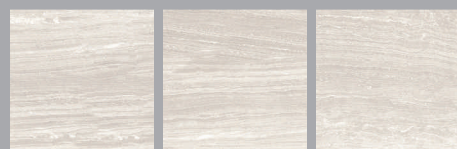
CARRARA BIANCO POLISH

RANDOM 3



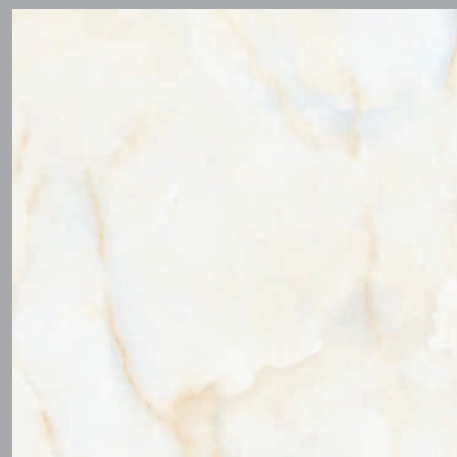
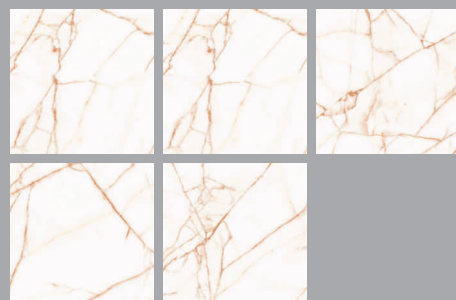
SAPPHIRE POLISH

RANDOM 3



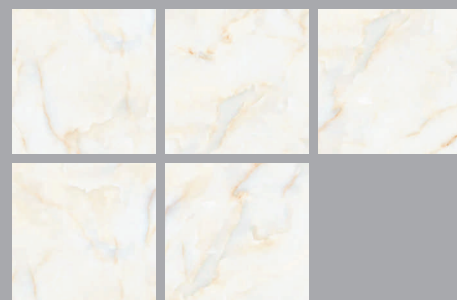
ONYX VINO POLISH

RANDOM 5



ONYXO WHITE POLISH

RANDOM 5



600 x 600 mm



BOTTICINO CREMA POLISH



BRECCIA FIORA POLISH



DYNA CLASSICO POLISH



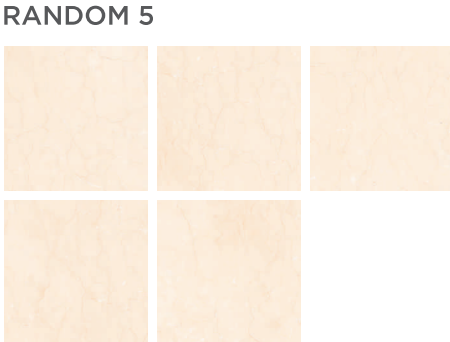
EMPREDOR LIGHT POLISH



MILANO CREMA POLISH



TRAVERTINO IVORY POLISH



600 x 600 mm



OMNIA BEIGE POLISH



ANTARIS BEIGE POLISH



ANTARIS OCRE POLISH



ADELLA GREY POLISH



ASTRA GREY POLISH



ADELLA GREY | POLISH

600 x 600 mm



AKOYA CREMA MATT



AKOYA BEIGE MATT



AKOYA GREY MATT

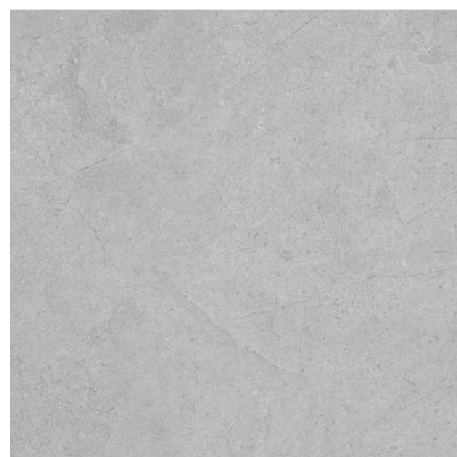
RANDOM 5



RANDOM 5



RANDOM 5

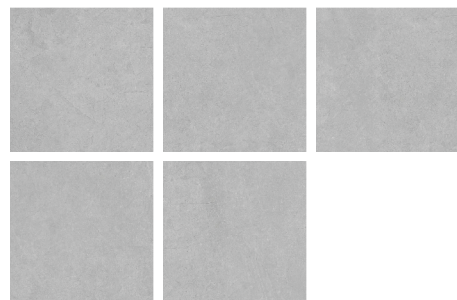


AKOYA GRIS MATT

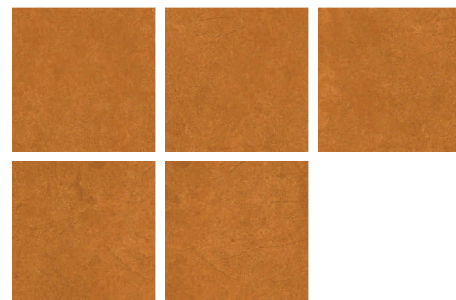


AKOYA COTTO MATT

RANDOM 5



RANDOM 5



AKOYA BEIGE | MATT

600 x 600 mm



CLIFFSTONE MARFIL MATT



CLIFFSTONE BEIGE MATT



CLIFFSTONE OCRE MATT

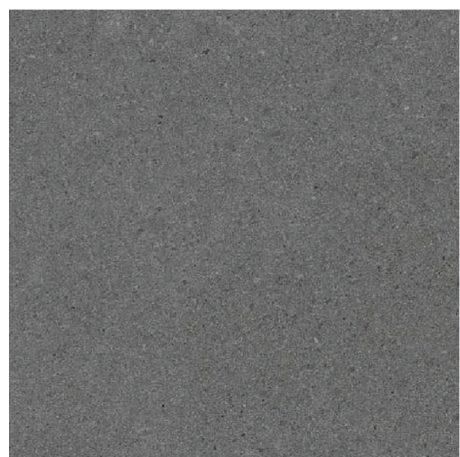
RANDOM 4



RANDOM 4



RANDOM 4



CLIFFSTONE GREY MATT

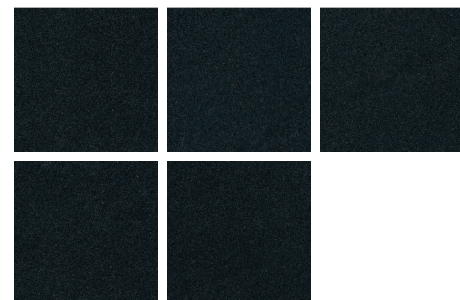


CLIFFSTONE GRIS MATT

RANDOM 4



RANDOM 4



CLIFFSTONE OCRE | MATT

600 x 600 mm



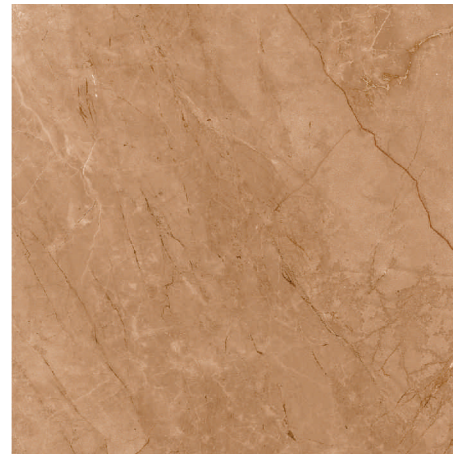
BERGEN MARFIL MATT

RANDOM 4



BERGEN BEIGE MATT

RANDOM 4



BERGEN BRONZE MATT

RANDOM 4



BERGEN GREY MATT

RANDOM 4



600 x 600 mm



DYSON MARFIL MATT

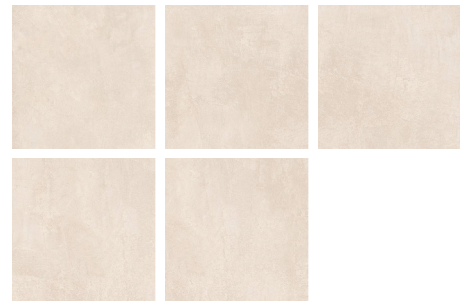


DYSON TAUPE MATT



DYSON BEIGE MATT

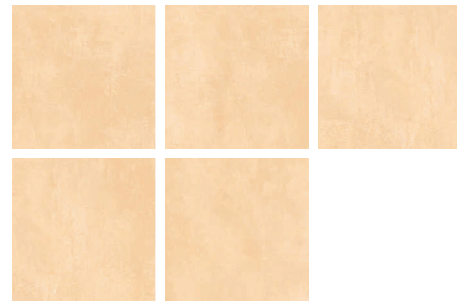
RANDOM 5



RANDOM 5



RANDOM 5

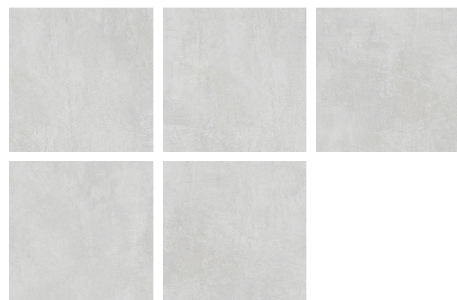


17



DYSON GREY MATT

RANDOM 5



19



20

600 x 600 mm

Kajaria
INFINITY

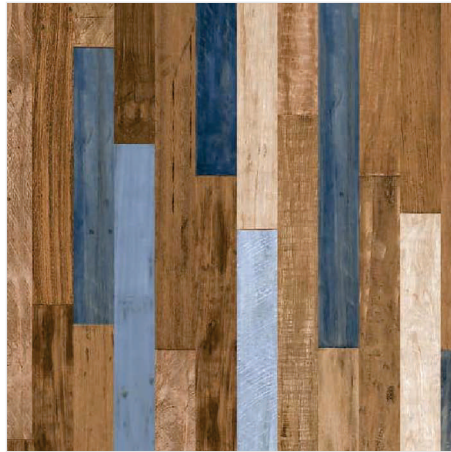
Glazed Vitrified Tiles



OZAAN GREY MATT



ROBBLE TEAK MATT



HAVANA MATT

RANDOM 1



RANDOM 2



RANDOM 2



DANZA MATT



SAFIRA MATT



ASTRO MATT

RANDOM 1



RANDOM 1

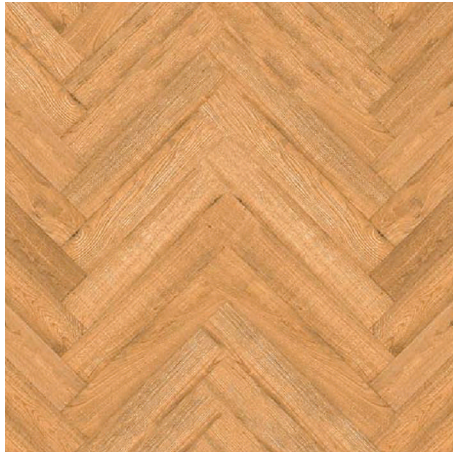


RANDOM 1

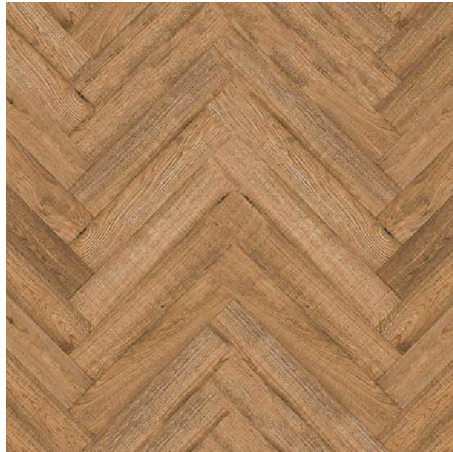


HAVANA | MATT

600 x 600 mm



BRICOLA ROSEWOOD MATT



BRICOLA TEAK MATT



BERGO TEAK MATT

RANDOM 1



RANDOM 1



RANDOM 1



TACOMA ROSEWOOD MATT



TACOMA WENGE MATT

RANDOM 3



RANDOM 3



BRICOLA TEAK | MATT

PACKING DETAILS

Dimensions mm	No of Slabs / Box	Coverage Area
600X600	04	1.44 M ²

TECHNICAL SPECIFICATIONS

S.No	Technical Characteristics	* IS 15622:2017, *EN 14411:2016 & ISO 13006:2018 Group B1a (Annex G) Standard's Requirement	Kajaria Infinity tile's Specifications	Test method
1.	Deviation in length & width	± 0.1 % ± 0.6 %/ ± 0.3 %	± 0.10 %	IS 13630-1 EN ISO 10545-2
2.	Deviation in thickness	± 5.0 %	± 5.00 %	IS 13630-1 EN ISO 10545-2
3.	Deviation in Straightness of sides	± 0.1 % ± 0.5 %/± 0.3 %	± 0.10 %	IS 13630-1 EN ISO 10545-2
4.	Deviation in Rectangularity	± 0.1 % ± 0.5 %/± 0.3 %	± 0.10 %	IS 13630-1 EN ISO 10545-2
5.	Deviation in Surface Flatness	± 0.5 % ± 0.5 %/± 0.4 %	± 0.15 %	IS 13630-1 EN ISO 10545-2
6.	Surface quality	95% of the tiles shall be free from visible defects	95% of the tiles shall be free from visible defects	IS 13630-1 EN ISO 10545-2
7.	Modulus of rupture	Avg. 35 N/mm ² , individual Min 32 N/mm ²	≥ 40 N/mm ²	IS 13630-6 / EN ISO 10545-4
8.	Breaking strength	Minimum 1300 N	≥ 2000 N	IS 13630-6 / EN ISO 10545-4
9.	Bulk Density	Minimum 2.20 g/cc	≥ 2.25 g/cc	IS 13630-2
10.	Glossiness	Manufacture to state the class	Min 5 for Rustic/Matt/Satin Finish Min 90 for Polish Finish	Glossimeter 60 degrees
11.	Water Absorption	≤ 0.08 %, Individual Max 0.1% ≤ 0.5 %, Individual Max. 0.6 %	≤ 0.08 % Individual Max 0.1%	IS 13630-2 / EN ISO 10545-3
12.	Resistance to surface abrasion of Glazed tiles	Minimum Class II Report abrasion class and cycles passed	PEI-Class III to Class IV	IS 13630-11 EN ISO 10545-7
13.	Thermal expansion from ambient temperature to 100 ° C	Test method available	6x10 ⁻⁴ K ⁻¹ Maximum	IS 13630-4 EN ISO 10545-8
14.	Thermal shock resistance	10 cycles Minimum Test method available	10 cycles Minimum	IS 13630-5 EN ISO 10545-9
15.	Moisture expansion	Maximum 0.02 Millimeter/Metre Test method available	Nil	IS 13630-3 EN ISO 10545-10
16.	Crazing resistance (Glazed Tiles)	Passes 4 cycles at 7.5 kg/cm ² Required	Passes 4 cycles at 7.5 kg/cm ²	IS 13630-9 EN ISO 10545-11
17.	Frost resistance	Required	100 cycles Minimum	IS 13630-10 EN ISO 10545-12
18.	Resistance to Household Chemicals & Swimming Pool Salts #	Minimum Class AA Minimum GB	Minimum Class AA Minimum GB	IS 13630-8 EN ISO 10545-13
19.	Resistance to low & high concentration of acids & alkalis #	Manufacturer to state classification	Minimum Class AA Minimum GLB,GHB	IS 13630-8 EN ISO 10545-13
20.	Stain resistance**	Minimum Class 1 Minimum Class 3	Minimum Class 1 Minimum Class 3	IS 13630-8 EN ISO 10545-14
21.	Slipperiness	Test method available	≥ R-10 for Rustic/Matt/Satin Finish ≥ R-9 for Polish Finish	DIN 51130:2014
22.	Co-efficient of friction	Manufacture to state the class	≥ 0.32 for Rustic/Matt/Satin Finish > 0.20 for Polish Finish	ISO 10545-17
23.	Scratch hardness of surface(Moh's scale)	Minimum 5 Test method available	Min 6 for Rustic/Matt/Satin Finish Min 5 for Polish/Marbletech Finish	IS 13630-13 EN 101
24.	Impact Resistance	Minimum 0.55 Test method available	Min 0.55 & No identification of cracking	IS 13630-14 EN ISO 10545-5

Resistance to acids & alkalis (Exception of Hydrofluoric acid & its compounds)

** Vitrified tiles have resistance to most of the stains / chemicals but, it is recommended to take due care while laying and for day-to-day maintenance.

- Colours in the catalogue are as accurate as printing process allows. Please check actual tile sample before making the final selection.
- Sizes mentioned in the catalogue are nominal sizes only.
- No claim will be entertained once the tiles are fixed.
- For better laying, please follow the instructions on the packaging box.
- In case it is required to lay the tiles on wall or floor in STAGGERED PATTERN, then always lay them in Overlap 20:80 ratio, as shown in VISUAL 1 instead of Brick pattern (overlap 50:50 ratio), as shown in VISUAL 2.

- Please make sure to check the shade/finish with the sales agent/dealer before making the final purchase because there might be variation in actual finish and that shown in the catalogue. The company will not bear any loss in such case.



VISUAL 1



VISUAL 2

Kajaria

INFINITY

Glazed Vitrified Tiles

Kajaria
INFINITY

Glazed Vitrified Tiles

Toll Free No. : 1800 309 309